



# Meridian Solar Farm

EN010169

Volume 6

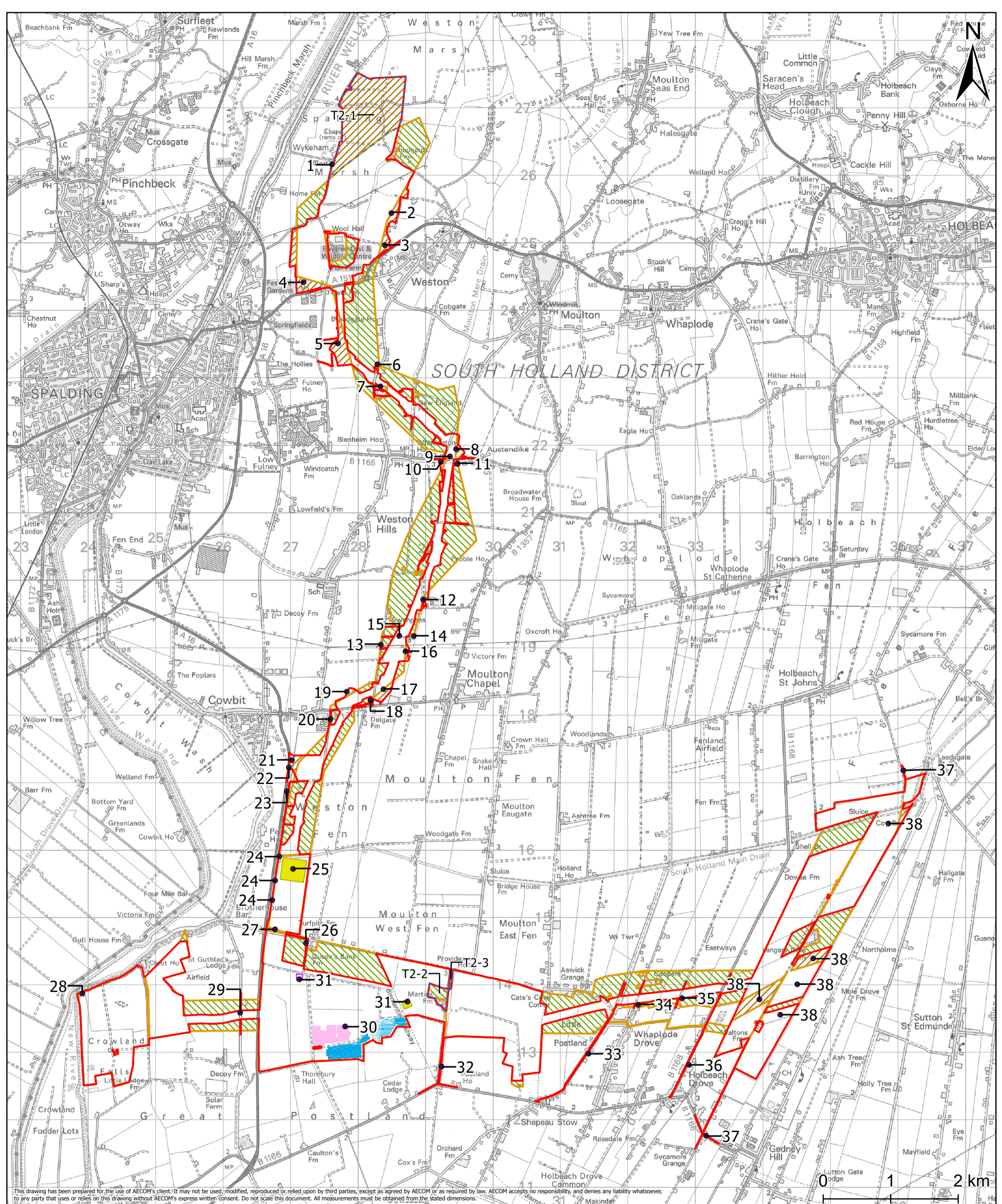
Environmental Statement

6.2 ES Figure 3-4:  
Targeted Consultation  
Changes Since Statutory  
Consultation

APFP Regulation 5(2)(a)

Infrastructure Planning (Applications:  
Prescribed Forms and Procedure)  
Regulations 2009

March 2026



This drawing has been prepared for the use of AECOM's client. It may not be used, modified, reproduced or relied upon by third parties, except as agreed by AECOM or as required by law. AECOM accepts no responsibility, and denies any liability whatsoever, to any party that uses or relies on this drawing without AECOM's express written consent. Do not scale this document. All measurements must be obtained from the stated dimensions.

**Project Title**  
Meridian Solar Farm

**Map Title**  
Environmental Statement  
Figure 3-4: Targeted Consultation Changes Since Statutory Consultation

- Legend**
- Order Limits
  - Stage Two Consultation Order limits
  - Second Targeted Consultation Change
  - Increase in Order Limits following Stage 2 Consultation
  - Decrease in Order Limits following Stage 2 Consultation
  - Increase in Solar PV
  - Decrease in Solar PV
- Changes to Substations**
- Substation Location at Statutory Consultation
  - Substation Location in the ES

**Date:** 20/03/2026

**Copyright**  
Contains OS data © Crown Copyright and database right 2026  
Contains data from OS Zoomstack. Reproduced from Ordnance Survey digital map data © Crown copyright 2025. All rights reserved. Licence number AC0000808122.

Refer to ES Chapter 3: Alternatives and Design Evolution (Doc Ref. 6.1) and Consultation Report (Doc Ref. 5.1) for the list of targeted consultation changes.

'31' First Targeted Consultation Change Number.  
T2-1 Second Targeted Consultation Change Number.

<b>Scale</b> 1:50,000	<b>Version</b> 0	<b>Drawn</b> LL	<b>Reviewed</b> AK
--------------------------	---------------------	--------------------	-----------------------

